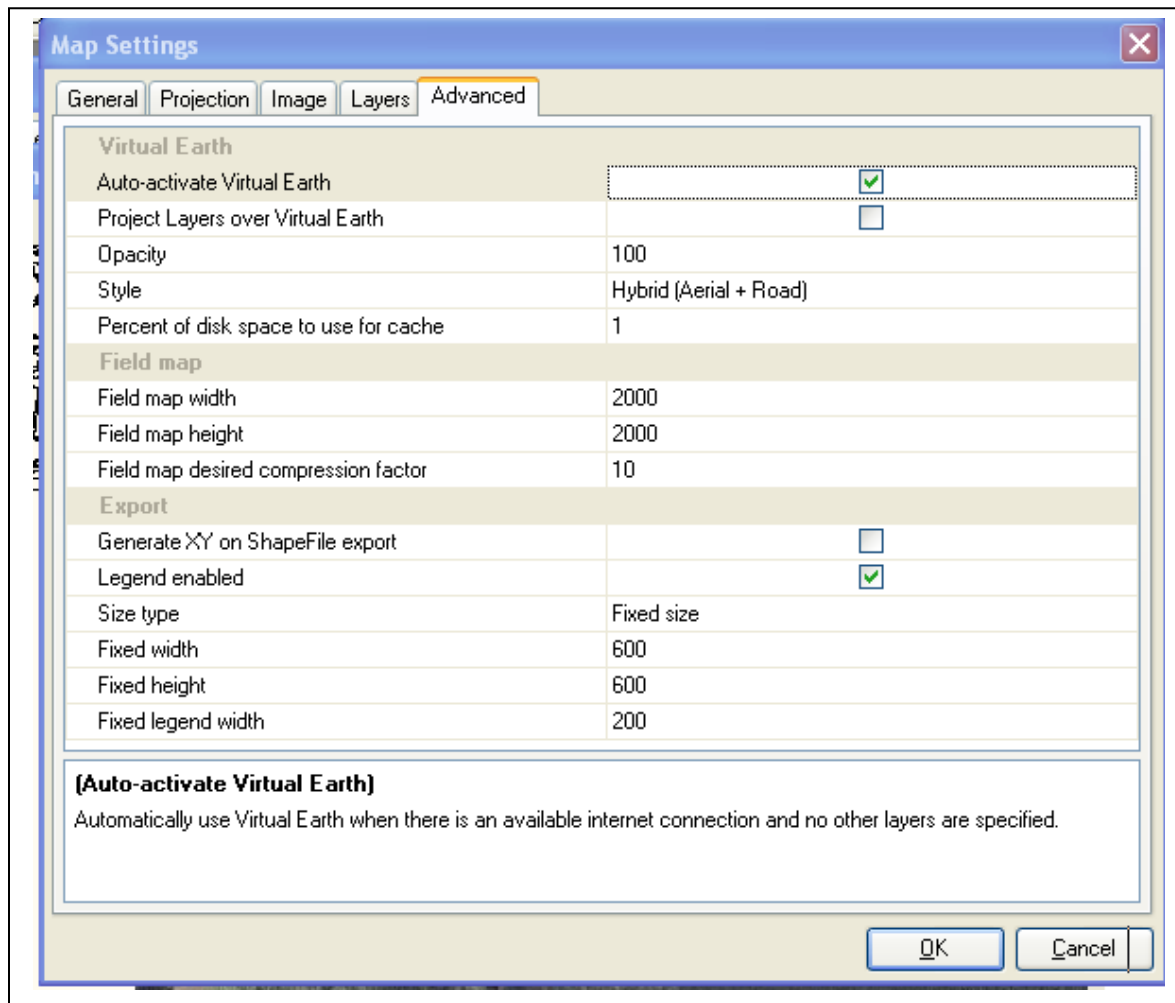


CyberTracker Feature

Virtual Earth and Map

As noted below, you can Auto-activate Virtual Earth if you have an internet connection rather than having to import a map of the area.

TIP: If you are going to be out in the field without internet access, you may also want to create a map of the area.



Saving a Map:

Zoom to the area you want to save and select “Field Map”. It will save this map in a folder for future use. Don’t zoom too far. You will be allowed to move the map around past the “edges” seen here.

